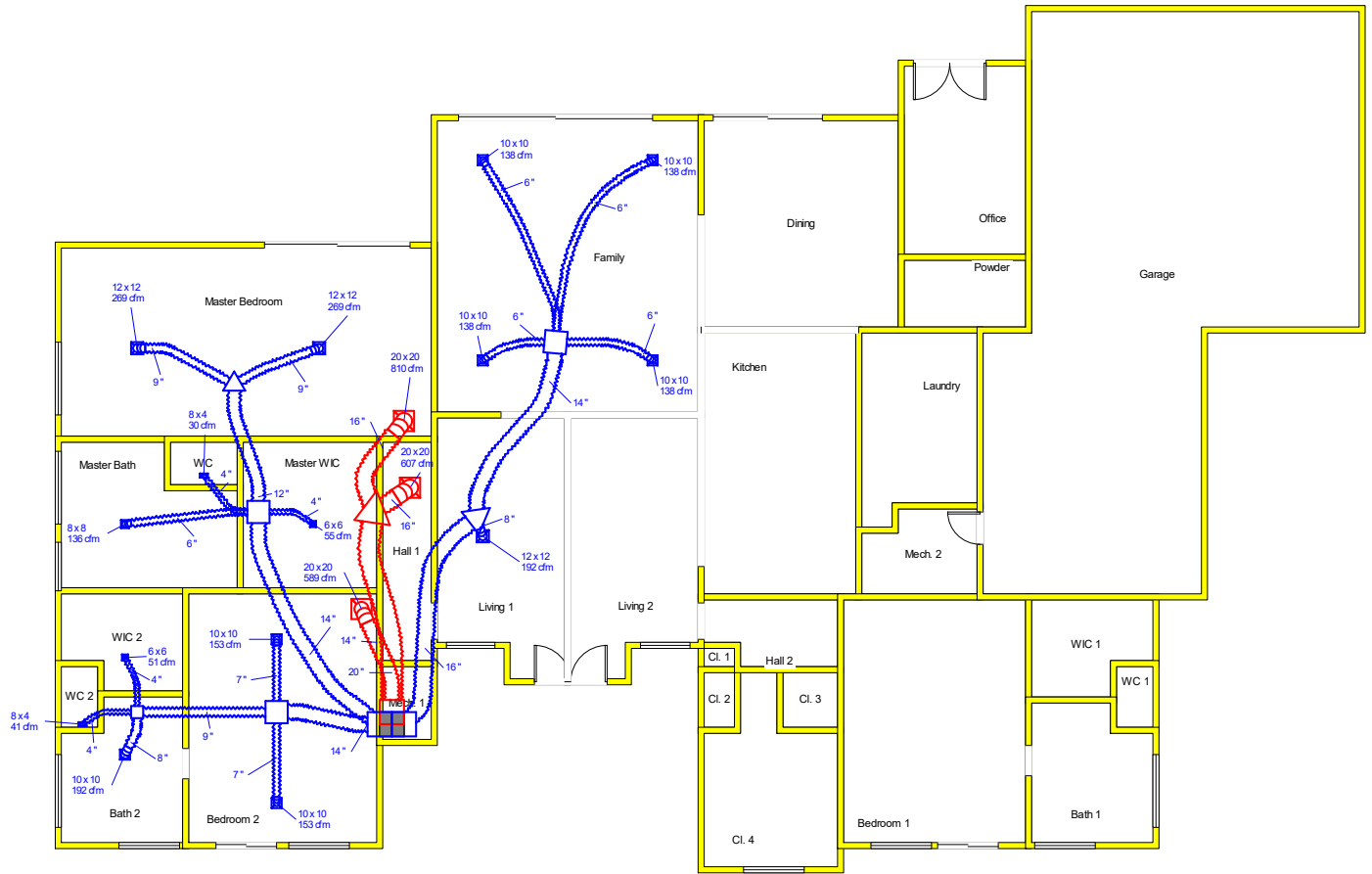


Sheet 1



**Job #:**  
**Performed for:**  
Sample Project

**WebREPS**  
1880 82nd Ave. Suite 203  
Vero Beach, FL 32966  
Phone: 800-810-3280 Fax: 888-971-2999

Scale: 1 : 186  
Page 1  
Right-Suite® Universal 2018  
18.0.31 RSU20791  
2018-Oct-07 22:19:31  
...02JT6Latest Manual J Sample.rup

### Project Information

For: Sample Project

	<b>Heating</b>	<b>Cooling</b>
External static pressure	0.60 in H2O	0.60 in H2O
Pressure losses	0.24 in H2O	0.24 in H2O
Available static pressure	0.36 in H2O	0.36 in H2O
Supply / return available pressure	0.244 / 0.116 in H2O	0.244 / 0.116 in H2O
Lowest friction rate	0.096 in/100ft	0.096 in/100ft
Actual air flow	1883 cfm	1883 cfm
Total effective length (TEL)	375 ft	

### Supply Branch Detail Table

Name	Design (Btuh)	Htg (cfm)	Clg (cfm)	Design FR	Diam (in)	H x W (in)	Duct Matl	Actual Ln (ft)	Ftg.Eqv Ln (ft)	Trunk
Bath 2	h 2608	192	124	0.140	8.0	0x0	VIFx	23.8	150.0	st6
Bedroom 2	h 2075	153	150	0.175	7.0	0x0	VIFx	14.6	125.0	st3
Bedroom 2-A	h 2075	153	150	0.173	7.0	0x0	VIFx	16.1	125.0	st3
Family	c 2674	109	138	0.096	6.0	0x0	VIFx	53.9	200.0	st4
Family-B	c 2674	109	138	0.107	6.0	0x0	VIFx	42.1	185.0	st4
Family-C	c 2674	109	138	0.103	6.0	0x0	VIFx	52.2	185.0	st4
Family-D	c 2674	109	138	0.107	6.0	0x0	VIFx	44.1	185.0	st4
Living 1	c 3714	158	192	0.157	8.0	0x0	VIFx	20.8	135.0	st1
Master Bath	h 1849	136	132	0.146	6.0	0x0	VIFx	32.1	135.0	st2
Master Bedroom	h 3653	269	227	0.119	9.0	0x0	VIFx	40.6	165.0	st5
Master Bedroom-B	h 3653	269	227	0.119	9.0	0x0	VIFx	39.5	165.0	st5
Master WIC	c 1071	23	55	0.152	4.0	0x0	VIFx	25.8	135.0	st2
WC	c 581	2	30	0.151	4.0	0x0	VIFx	27.0	135.0	st2
WC 2	h 561	41	16	0.139	4.0	0x0	VIFx	24.9	150.0	st6
WIC 2	h 688	51	27	0.140	4.0	0x0	VIFx	24.8	150.0	st6

## Supply Trunk Detail Table

Name	Trunk Type	Htg (cfm)	Clg (cfm)	Design FR	Veloc (fpm)	Diam (in)	H x W (in)	Duct Material	Trunk
st4	Peak AVF	437	553	0.096	518	14.0	0 x 0	VinIFlx	st1
st1	Peak AVF	595	746	0.096	534	16.0	0 x 0	VinIFlx	
st5	Peak AVF	538	454	0.119	685	12.0	0 x 0	VinIFlx	st2
st2	Peak AVF	699	672	0.119	654	14.0	0 x 0	VinIFlx	
st6	Peak AVF	284	167	0.139	642	9.0	0 x 0	VinIFlx	st3
st3	Peak AVF	589	466	0.139	551	14.0	0 x 0	VinIFlx	

## Return Branch Detail Table

Name	Grille Size (in)	Htg (cfm)	Clg (cfm)	TEL (ft)	Design FR	Veloc (fpm)	Diam (in)	H x W (in)	Stud/Joist Opening (in)	Duct Matl	Trunk
rb3	0x0	808	810	120.7	0.096	580	16.0	0x 0		VIFx	rt1
rb2	0x0	486	607	110.4	0.105	435	16.0	0x 0		VIFx	rt1
rb4	0x0	589	466	74.0	0.157	551	14.0	0x 0		VIFx	

## Return Trunk Detail Table

Name	Trunk Type	Htg (cfm)	Clg (cfm)	Design FR	Veloc (fpm)	Diam (in)	H x W (in)	Duct Material	Trunk
rt1	Peak AVF	1294	1417	0.096	650	20.0	0 x 0	VinIFlx	